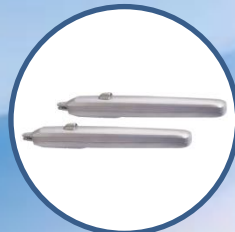


# SAMT

Garage & Gate Automation



RoHS  
COMPLIANT

SAMT Garage & Gate Automation

Factory 19, 5 Lyn Parade

Prestons NSW 2170

PH: 02 9607 4100

FAX: 02 9607 4200

[www.samtgatemotors.com.au](http://www.samtgatemotors.com.au)

# Sliding Gate Opener (F-500B/M/G)



Emergency Key

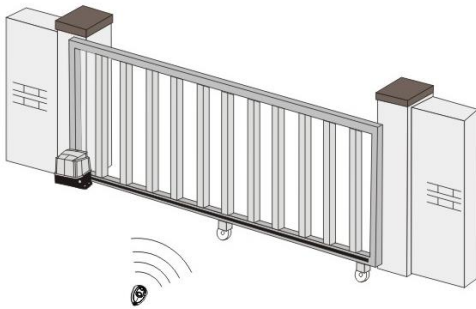


FR32x2



## Features:

1. Timely resistance detection, automatic reverse when obstacles are met.
2. Remote control with rolling code technology.
3. Powerful AC motor with low noise & overheat protection.
4. Emergency release provides manual operation in case of power failure.
5. Safety further ensured with optional accessories photocells and flashing lights.

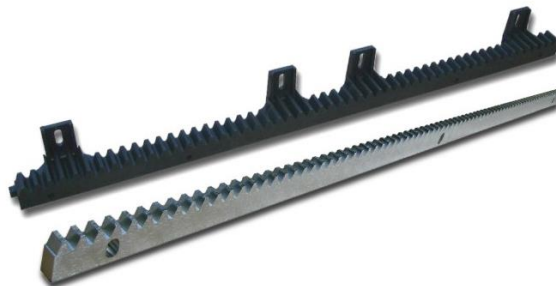


## Specification

Item	F-500B	F-500M	F-500G
Max. door weight(kg)	800	1200	1600
Input power (W)	250	330	350
Working voltage (Vac)	220-240	220-240	220-240
Thermal protection temperature (°C)	120	120	120
Motor rotate speed (rpm)	1400	1400	1400
Moving speed (m/min)	11.5	11.5	11.5
Ambient temperature range (°C)	-20~+40	-20~+40	-20~+40

■ FA51

■ FA52



# Sliding Gate Opener (F-550)



Emergency Key

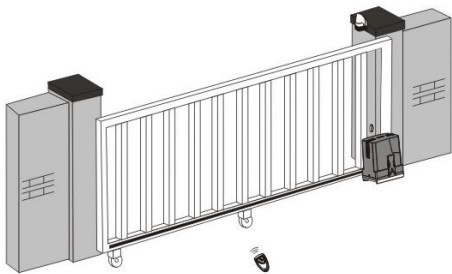


FR32x2



## Features:

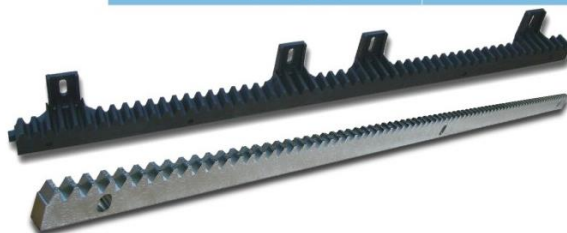
1. Die-casting A-alloy mechanism with powder spraying, stable and solid.
2. Soft start and stop avoids impact to the gate when it is opening and closing.
3. Mechanical and electrical travel limit switches provide double protection and accurate positioning.
4. Selection for installing direction.
5. Connector for pedestrian door sensor.
6. Infrared protection to ensure high security.
7. Timely resistance detection, automatic reverse when meeting obstacles. Force adjustable.
8. Optional AC or DC flashing light.



Model	F-550(24V/DC)	F-550(12V/DC-A)	F-550(12V/DC-B)
Rated voltage	AC230V 50/60Hz	DC12V	AC230V 50/60Hz
Motor rated voltage (Vac)	24	12	12
Input power (W)	100	60	60
Ambient temperature range (°C)	-20~+50	-20~+50	-20~+50
Max.gate weight (kg)	700	350	350
Max.gate width (m)	6	6	6
Protection class (IP)	54	54	54
Max.travel limit (mm)	700	350	350
Moving speed(m/min)	15	15	15
Motor rotate speed(rpm)	3000	3000	3000

FA51

FA52



# Optional accessories I

Image	Model	Specification
	FA10 2-channel external receiver FA20 4-channel external receiver	Working frequency: 433MHz Supply voltage: 12/24V, AC/DC Max. quantity of transmitters: 120pcs
	FR11 Wall console (2-channel transmitter)	Working frequency: 433MHz Remote distance: 50m Connection: Wireless
	FR1 2-channel transmitter	Working frequency: 433MHz Remote distance: 50m
	FR32 2-channel transmitter	Working frequency: 433MHz Remote distance: 50m
	FR36 2-channel transmitter	Working frequency: 433MHz Remote distance: 50m
	FR46 4-channel transmitter	Working frequency: 433MHz Remote distance: 50m
	FR38 2-channel transmitter	Working frequency: 433MHz Remote distance: 50m
	FA62 Keypad (2-channel transmitter)	Working frequency: 433MHz Remote distance: 50m Connection: Wireless

## Optional accessories II

Image	Model	Specification
	FA61 Plastic keyswitch	Voltage at contacts: 24Vdc Protection class: IP54 Operation mode : OPEN – STOP – CLOSE
	FA63 Metal keyswitch	Voltage at contacts: 24Vdc Protection class: IP54 Operation mode : OPEN – STOP – CLOSE
	FA30 Photocell	Remote distance: 20m Supply voltage: 12/24V, AC/DC Protection class: IP54
	FA31 Photocell	Remote distance: 20m Supply voltage: 12/24V, AC/DC Protection class: IP54
	FA40 Flashing light Bulb	Supply voltage: 220V–240Vac Power: 25W Protection class: IP54
	FA42 Flashing light LED	Supply voltage: 220V–240Vac Rated Power: <1.7W Protection class: IP54
	Lock release cable	Length: 2.5m
	External emergency release	Emergency release for garage door opener

# SAMT

The logo for SAMT features the word "SAMT" in a bold, red, sans-serif font. The letter "A" is replaced by a stylized gear with a red center and white teeth. Two red arrows curve around the gear, one pointing clockwise and one pointing counter-clockwise, suggesting motion or automation.

## Garage & Gate Automation

**SAMT Garage & Gate Automation**

Factory 19, 5 Lyn Parade

Prestons NSW 2170

**PH: 02 9607 4100**

**Mob: 0411 729 849**

**FAX: 02 9607 4200**

[www.samtgatemotors.com.au](http://www.samtgatemotors.com.au)